

Estrogen Inducible Protein pS2 Antibody
Rabbit mAb
Catalog # AP91613**Specification**

Estrogen Inducible Protein pS2 Antibody - Product Information

Application	WB, IHC, FC, ICC, IP
Primary Accession	P04155
Reactivity	Rat
Clonality	Monoclonal
Other Names	
hP1.A; HP1A; HPS2; pNR2; pS2; TFF1;	
Isotype	Rabbit IgG
Host	Rabbit
Calculated MW	9150 Da

Estrogen Inducible Protein pS2 Antibody - Additional Information

Dilution	WB~~1:1000 IHC~~1:100~500 FC~~1:10~50 ICC~~N/A IP~~N/A
Purification	Affinity-chromatography
Immunogen	A synthesized peptide derived from human Estrogen Inducible Protein pS2
Description	Stabilizer of the mucous gel overlying the gastrointestinal mucosa that provides a physical barrier against various noxious agents. May inhibit the growth of calcium oxalate crystals in urine.
Storage Condition and Buffer	Rabbit IgG in phosphate buffered saline , pH 7.4, 150mM NaCl, 0.02% sodium azide and 50% glycerol. Store at +4°C short term. Store at -20°C long term. Avoid freeze / thaw cycle.

Estrogen Inducible Protein pS2 Antibody - Protein Information**Name** TFF1**Synonyms** BCEI, PS2**Function**

Stabilizer of the mucous gel overlying the gastrointestinal mucosa that provides a physical barrier against various noxious agents. May inhibit the growth of calcium oxalate crystals in urine.

Cellular Location

Secreted

Tissue Location

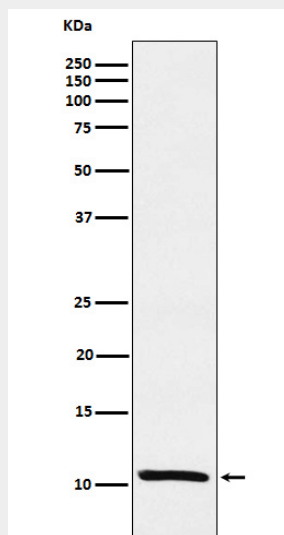
Found in stomach, with highest levels in the upper gastric mucosal cells (at protein level). Detected in goblet cells of the small and large intestine and rectum, small submucosal glands in the esophagus, mucous acini of the sublingual gland, submucosal glands of the trachea, and epithelial cells lining the exocrine pancreatic ducts but not in the remainder of the pancreas (at protein level). Scattered expression is detected in the epithelial cells of the gallbladder and submucosal glands of the vagina, and weak expression is observed in the bronchial goblet cells of the pseudostratified epithelia in the respiratory system (at protein level). Detected in urine (at protein level). Strongly expressed in breast cancer but at low levels in normal mammary tissue. It is regulated by estrogen in MCF-7 cells. Strong expression found in normal gastric mucosa and in the regenerative tissues surrounding ulcerous lesions of gastrointestinal tract, but lower expression found in gastric cancer (at protein level).

Estrogen Inducible Protein pS2 Antibody - Protocols

Provided below are standard protocols that you may find useful for product applications.

- [Western Blot](#)
- [Blocking Peptides](#)
- [Dot Blot](#)
- [Immunohistochemistry](#)
- [Immunofluorescence](#)
- [Immunoprecipitation](#)
- [Flow Cytometry](#)
- [Cell Culture](#)

Estrogen Inducible Protein pS2 Antibody - Images



Western blot analysis of Estrogen Inducible Protein pS2 expression in MCF-7 cell lysate.